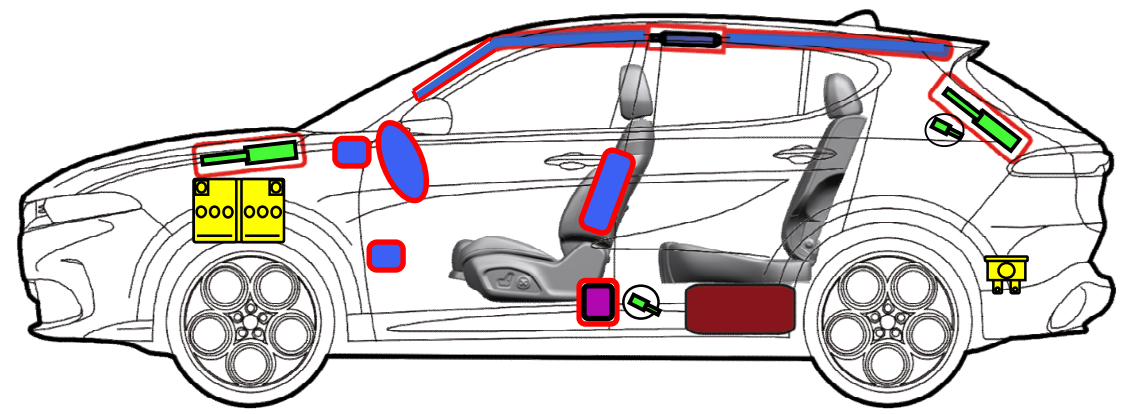
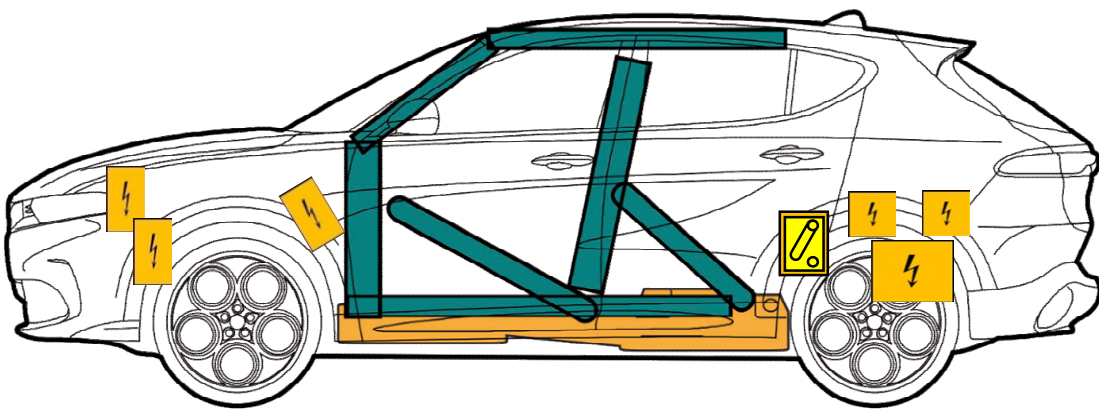
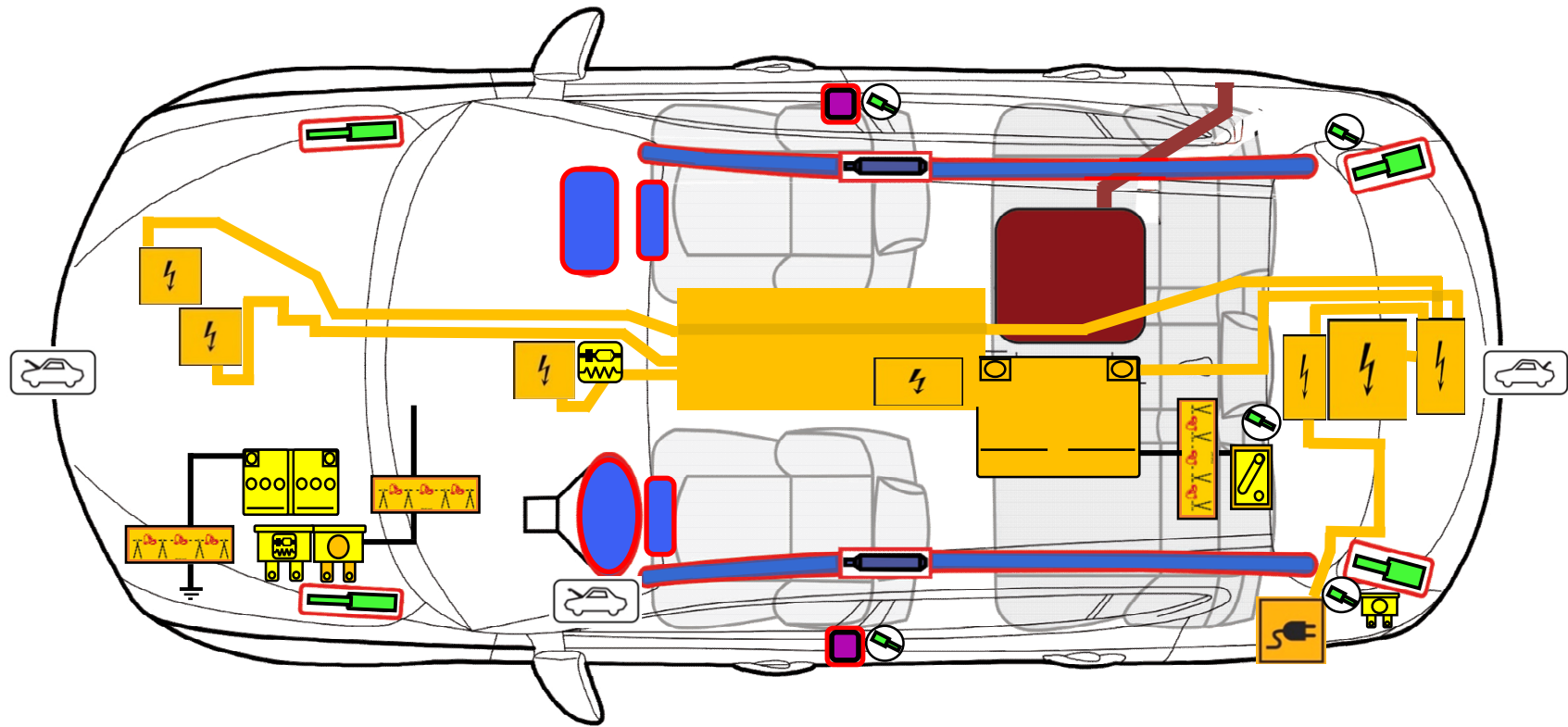




Alfa Romeo Tonale

5 ⚡ Plug-In Hybrid Q4

2023



ISO 17940-1 PICTOGRAMS			OCCUPANT/CURTIAN/BOLSTER AIR BAG AND INFLATOR		AIR BAG INFLATOR		SEATBELT PRETENSIONER		AUTOMATIC ROLL-OVER PROTECTIO		
			PEDESTRIAN PROTECTION DEVICE		GAS STRUT, PRE-LOADED SPRING, BELT RETRACTOR		RESTRAINT SYSTEM CONTROL MODULE		HIGH STRENGTH ZONE		ZONE REQUIRING SPECIAL ATTENTION
			LOW VOLTAGE BATTERY		LOW VOLTAGE ULTRA-CAPACITOR		FUEL TANK		COMPRESSED GAS TANK		SAFETY VALVE COMPRESSED GAS
			HIGH VOLTAGE BATTERY PACK		HIGH VOLTAGE CABLE		HIGH VOLTAGE DISCONNECT		LOW VOLTAGE FUSE BOX DISABLING HIGH VOLTAGE		HIGH VOLTAGE ULTRA-CAPACITOR
ISO 17940-3 AND OTHER PICTOGRAMS			ENGINE ACCESS LATCH TRUNK/CARGO		LOW VOLTAGE DISCONNECT		VEHICLE CHARGE PORT		VEHICLE INDUCTION CHARGING		RESPONDER CUT-LOOP
			DISCONNECT HIGH VOLTAGE VIA LOW VOLTAGE		SOLAR PANEL		HIGH VOLTAGE FUEL CELL		HIGH VOLTAGE COMPONENT		FUEL TANK WITH DIESEL FUEL
			FUEL TANK WITH GASOLINE OR ETHANOL		FUEL TANK WITH BIO-FUEL		HIGH VOLTAGE FUSE BOX		LOW VOLTAGE FUSE BOX		LOW VOLTAGE FUSE BOX DISABLING SRS

WARNING: Lack of engine noise does not mean vehicle is off: vehicle movement capability exists until vehicle is fully shut down.

Always wear appropriate high voltage and turn-out PPE when addressing a damaged Alfa Romeo Tonale Plug-In Hybrid Q4

WARNING: High voltage components may remain energized even after following the steps in this sheet.

1. Identification / recognition

- Location on the vehicle of the name of the model and the type of propulsion.



- Energy Source: Lithium Ion Batteries



WARNING: Lack of engine noise does not mean vehicle is off: vehicle movement capability exists until the vehicle is fully shut down.

2. Immobilization / stabilization / lifting

Immobility

1



2

The 12V system must be active:

- 1) Block the wheels and pulling up on parking brake switch to engage the parking brake.
- 2) Move the selector lever to the parking (P) position.

Stabilization/lifting points



- Jack Position
- Support Position
- Vehicle Center Of Gravity



WARNING: Do not place support items such as wooden blocks or pneumatic hoists under the exhaust system, fuel system and battery. Failure to comply may cause fire, electric shock or gas leakage.

3. Disable direct hazards / safety regulations

MAIN METHOD

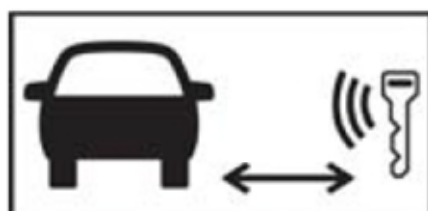


1. Unplug from any charging equipment.
2. Press the start stop button until the indicator shows off.

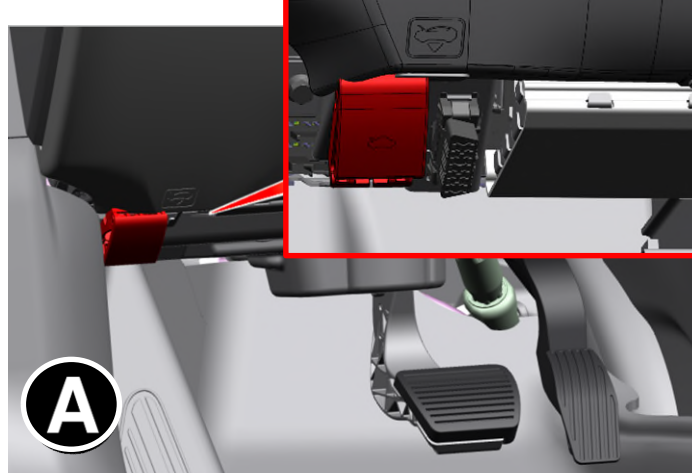


WARNING: Press the START-ENGINE-STOP button with the brake pedal NOT PRESSED.

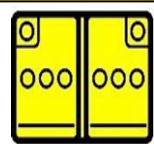
3. Remove the Key Fob 20 feet away from the vehicle.



4. Pull the release handle (A) to disengage primary hood latch, and release secondary latch handle (B) to open hood.



3. Disable direct hazards / safety regulations cont.

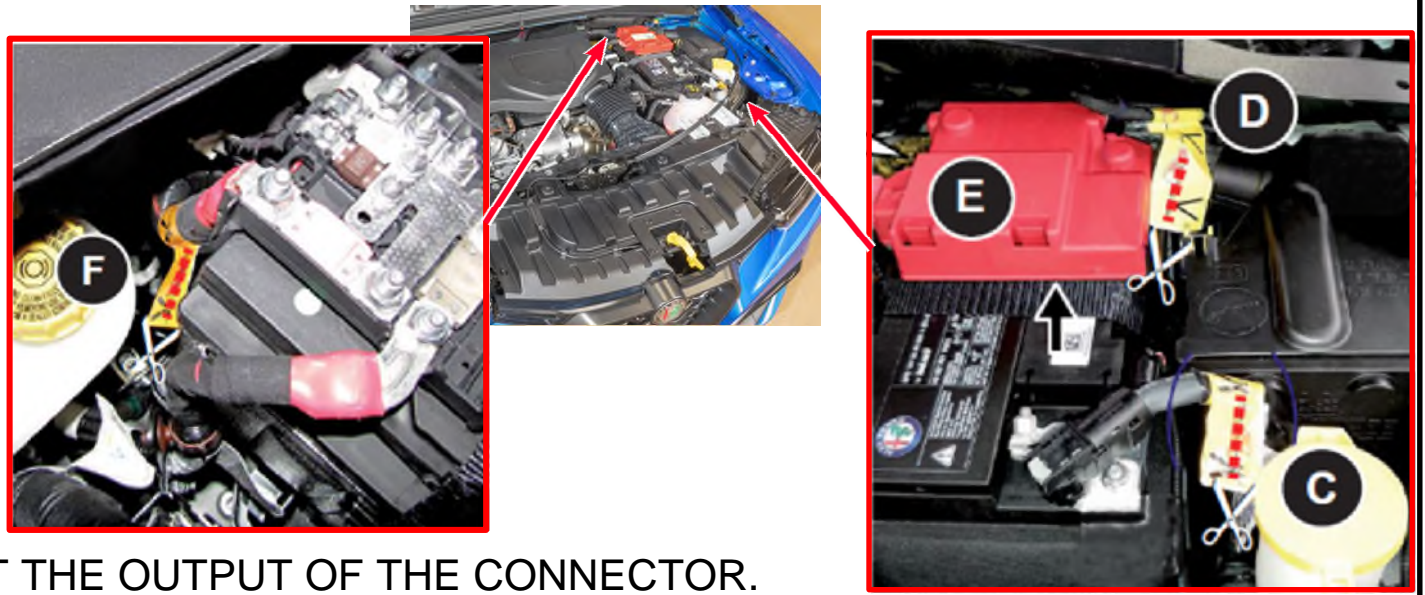


5. Unplug (or Cut) the ground cable (C) from the 12V battery.



6. Cut the low voltage cable (D) to disable the High Voltage.

7. Remove the red battery lid (E) and cut the low voltage cable (F) to deactivate the High Voltage.



CUT THE CABLE AT THE LABEL OR AT THE OUTPUT OF THE CONNECTOR.

ALTERNATE METHOD

WARNING: This method disables high voltage, but NOT LOW VOLTAGE—restraint systems will remain powered

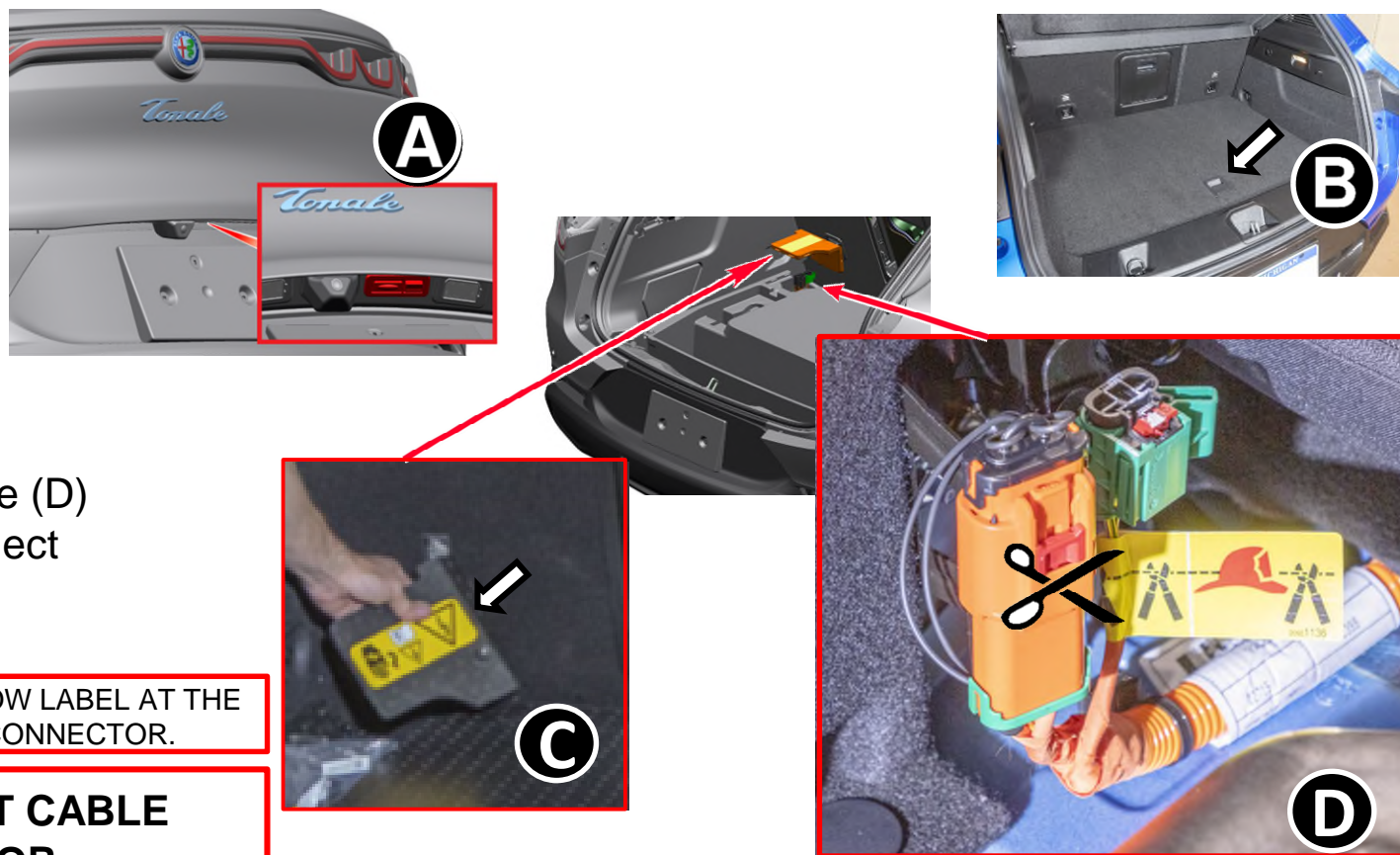


1. Use the handle (A) and open the tailgate.

2. Use the handle (B) to pull up the load floor cover and remove it from the vehicle.

3. Remove the lid (C).

4. Cut the low voltage cable (D) at the high voltage disconnect device (Black and Green Connector).



WARNING: ONLY CUT THE CABLE AT THE YELLOW LABEL AT THE OUTPUT OF THE BLACK AND GREEN SERVICE CONNECTOR.

WARNING: DO NOT CUT CABLE TO ORANGE CONNECTOR

4. Access to the occupants

Do not cut into any hazards depicted on page 1. Also avoid cutting fuel, brake & coolant tanks/lines

Recommended cut points:

High Strength Steel

Laminated glass

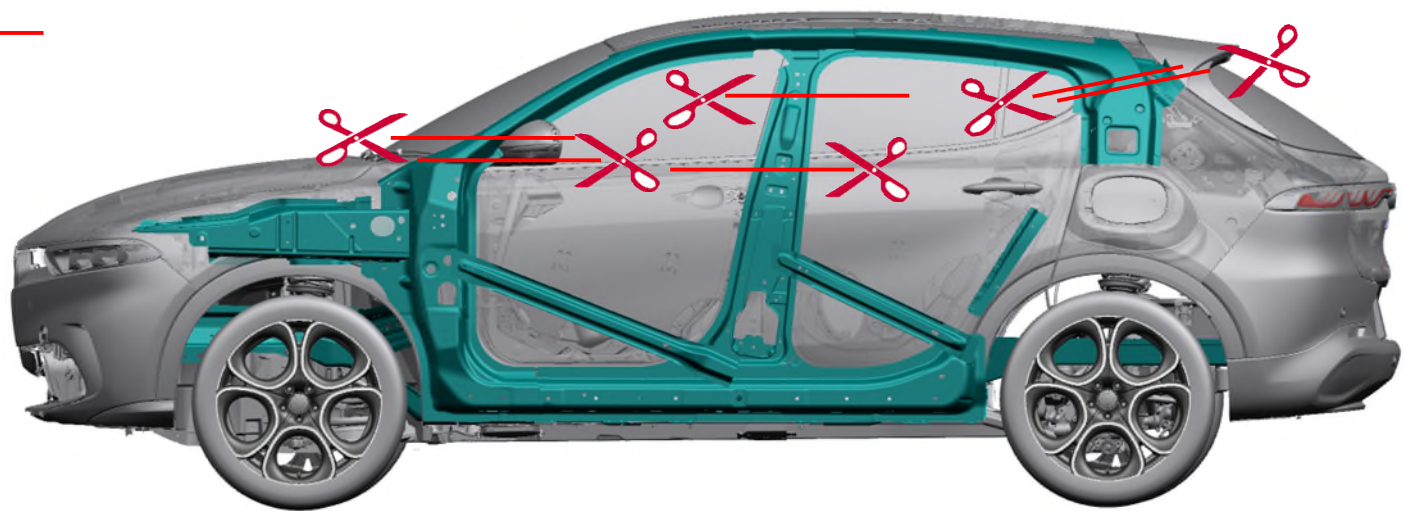
Windshield

Tempered glass

All side windows

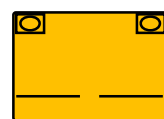
Liftgate

Sunroof



5. Stored energy / liquids / gases / solids

High voltage energy should be contained to within the Lithium-ion battery pack when possible. Do not discharge.



Fuel
43L



WARNING: The fuel system is pressurized.

WARNING: Avoid cutting, touching or intervening on high voltage components to avoid a risk of injury or death.

6. In case of fire

Do not cut into any hazards depicted on page 1. Also avoid cutting fuel, brake & coolant tanks/lines

Apply large amounts of water at the first sign of thermal activity. Misting is recommended.

WARNING: Gaseous emissions from a thermally active damaged lithium-ion battery include hydrogen, which is explosive when mixed with oxygen in the air.



WARNING: Gaseous emissions from a thermally active lithium-ion battery include hydrogen fluoride which when combined with moisture in the human body forms an acid that can cause burns, respiratory distress and injury, blindness and/or death.



Immediately open all doors and remove all glass to maximize ventilation.



WARNING: Delayed ignition or re-ignition is possible. Monitor for thermal activity throughout response operations with an infrared thermometer or equivalent.



7. In case of submersion

With the Alfa Romeo Tonale Plug-In Hybrid Q4 that is without physical damage (such as from an accident) the risk of electrical shock when submerged or flooded is not increased.



A vehicle with impact damage presents an increased electrical shock hazard risk. If HV is open to the environment, you must stay away from damaged HV components.



In salt water, chlorine may be produced in concentrations that could be corrosive and could have adverse effects on human health. Excess heat, oxygen and hydrogen may also be produced through electrolysis.



8. Towing / transportation / storage

POST-INCIDENT DELIVERY TO SERVICE: If air bags have deployed, the vehicle cannot be driven again until repaired, as air bag protection will not be available to occupants in the event of a collision. After any collision, the vehicle should be taken to a certified service center immediately.

Towing Instructions:

1. Place car in PARK, with brake on
2. Transport on flatbed or trailer ONLY
3. Drag vehicle onto flatbed or trailer
4. Secure fully to conveyance
5. At location, drag off conveyance
6. Leave vehicle in PARK with brake set
7. Chock wheels if not secured otherwise



DO NOT PUSH



DO NOT TOW WITH
WHEELS ON GROUND



FLATBED ONLY

WARNING: Rotation of wheels may result in generation of high voltage or unexpected propulsion.



Monitor for thermal activity/fire throughout transport and storage. Store away from other vehicles, outside, and away from air inlets to occupied structures.

Collect spilled fluids for disposal as follows:

Collect spilled engine coolant and any coolant from electronic systems in the normal manner for spilled glycol/water mix.

Collect spilled engine and hydraulic oil with absorbent material, and use detergents to recover from masonry. Collect contaminated ground for disposal in accordance with local requirements as applicable.

Collect spilled gasoline in the same manner as oils, but employ precautions for the management of flammable and explosive vapors.

Collect spilled 12 V battery electrolyte with an absorbent that neutralizes the highly acidic sulfuric acid electrolyte. Do not handle 12 V battery electrolyte, or materials contaminated with 12 V battery electrolyte without chemically resistant protection.



All debris should be collected and disposed of in an environmentally appropriate manner. Skin contact with battery pack internals is to be avoided. Leakage of electrolyte from the Li-ion battery is unlikely. Any leaking battery fluids are likely glycol-water coolant.

9. Important additional information

Stellantis / FCA US Customer Center: (877) 426-5337
 Stellantis / FCA Canada Customer Center: (800) 465-2001 (English) (800) 387-9983 (French)
 Stellantis / FCA Mexico Customer Center: +(52) 55 50817568
 Stellantis / FCA within Mexico City only: (800) 505-1300
 Stellantis / FCA Caribbean Customer Center: (877) 426-5337

This brochure is a publication of FCA US LLC. All product illustrations and specifications are based upon current information at the time of publication approval. FCA US LLC reserves the right to make changes from time to time, without notice or obligation, in prices, specifications, colors and materials, and to change or discontinue models, which are considered necessary to the purpose of product improvement or for reason of design and/or marketing.

10. Explanation of pictograms used

	GASOLINE-ELECTRIC VEHICLE		IMPORTANT INFORMATION		ELECTRICAL SHOCK HAZARD
	RISK OF FIRE		RISK OF EXPLOSION		HARMFUL OR LETHAL TO HUMAN HEALTH
	CORROSIVE SUBSTANCE		RISK OF INJURY		LITHIUM-ION BATTERY—HANDLE APPROPRIATELY
	DO NOT PUSH VEHICLE		RELOCATE KEY FOB AWAY FROM VEHICLE		RISK OF THERMAL ACTIVITY FROM BATTERY SYSTEM
	FLATBED/TRAILER TOW ONLY		DO NOT TOW WITH WHEELS ON GROUND		USE LARGE AMOUNTS OF WATER