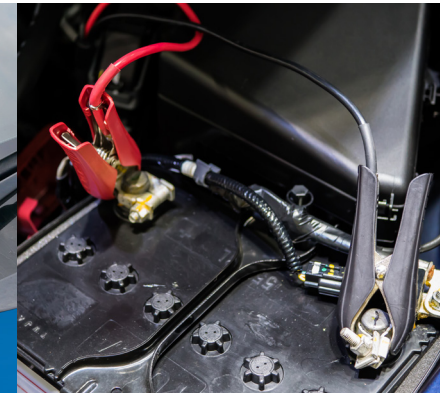




# MOPAR VEHICLE PROTECTION (MVP) MULTICARE

| MVP PROTECTION          | MVP MULTICARE SUPERIOR PROTECTION | MVP PREMIER TIRE & WHEEL CARE |
|-------------------------|-----------------------------------|-------------------------------|
| Tire & Wheel with Curb  | ✓                                 | ✓                             |
| Cosmetic Wheel Coverage | ✓                                 | ✓                             |
| Paintless Dent Repair   | ✓                                 |                               |
| Windshield Repair       | ✓                                 |                               |
| Roadside Assistance     | ✓                                 |                               |



## Tire & Wheel

Road hazard coverage with no deductible or hidden fees, to include mounting, balancing, and valve stems; wheels, sales tax, and labor charges.

- Covers damage from blowouts, nails, glass, potholes, and debris
- Covers aftermarket wheels

**Also Covers:**  
Curb Damage and Tire Pressure Monitoring Sensors

## Cosmetic Wheel Coverage

A repair process that restores the appearance of your wheels.

- Repairs scrapes, scratches, and nicks caused by curb damage
- If not repairable, the wheel will be replaced

**Wheel Covers (Hubcaps), Alloy, Chrome, and Chrome Clad Wheels are Covered**

## Paintless Dent Repair

Minor dents and door dings are removed by trained technicians.

- No limit to the number of times the Paintless Dent Repair process can be applied
- No sanding, painting, or body fillers are used
- Hail damage deductible is covered up to \$1000 when using Paintless Dent Repair

## Windshield Repair

A permanent process in which cracks and breaks may be repaired with a powerful resin.

- A trained technician will repair your damaged windshield, so you avoid the cost of replacement
- Repairs minor stars, cracks and chips
- Can save on having to pay a costly windshield deductible

## Roadside Assistance

Coverage offers 24-hour emergency roadside assistance including towing, lockout assistance, and tire.

- Nationwide 24/7/365 service

## Genuine Protection Means Comprehensive, Peace-of-Mind Coverage

Genuine Protection is a program that includes coverage for issues that are usually excluded, such as damage caused by car washes, construction zones, or metal plates on the road. It also covers oversized tires and wheels, aftermarket wheels, chrome and chrome clad wheels, wheel covers (hubcaps), snow tires, and more.

Coverage excludes Carbon Fiber Wheels. This is a summary of possible benefits available. Certain restrictions and limitations may apply. Please refer to the actual contract for specific details and limitations.



# MOPAR VEHICLE PROTECTION (MVP) MULTICARE

| MVP PROTECTION          | MVP MULTICARE SUPERIOR PROTECTION | MVP PREMIER TIRE & WHEEL CARE |
|-------------------------|-----------------------------------|-------------------------------|
| Tire & Wheel with Curb  | ✓                                 | ✓                             |
| Cosmetic Wheel Coverage | ✓                                 | ✓                             |
| Paintless Dent Repair   | ✓                                 |                               |
| Windshield Repair       | ✓                                 |                               |
| Roadside Assistance     | ✓                                 |                               |



## Genuine Protection Means Comprehensive, Peace-of-Mind Coverage



Construction Zones



Metal Plates



Cosmetic Damage  
Wheel Replacement



Cosmetic Damage to  
Chrome/Chrome Clad



Cosmetic Damage  
to Hubcaps



Aftermarket Wheels  
with No Surcharges



Curb Damage



Includes Oversized  
Tires and Wheels



Tire Pressure  
Monitoring Sensors



Snow Tires



Hail Damage

Coverage excludes Carbon Fiber Wheels. This is a summary of possible benefits available. Certain restrictions and limitations may apply. Please refer to the actual contract for specific details and limitations.